

PROTECTION OF CORALLIUM IS LONG OVERDUE

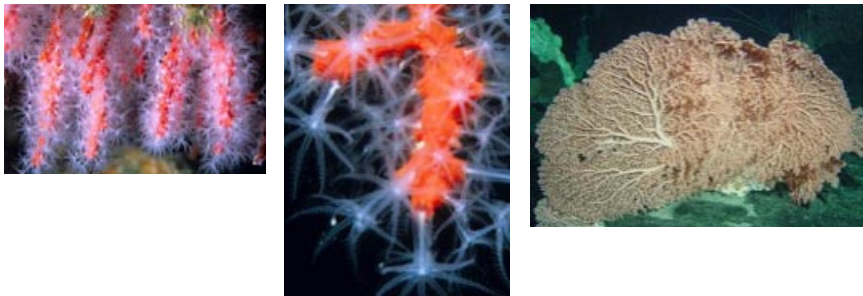
Corallium, also called red and pink coral, is extremely vulnerable to pressure from overfishing. Commercial harvest to satisfy international trade has reduced *Corallium* colony densities, shifted size structure to small, immature colonies that are worthless to the *Corallium* trade, and lowered reproductive output. Trade has also decreased the genetic diversity within and among populations. Despite the vulnerability of and the global market pressure on *Corallium*, there are no binding international instruments for ensuring its sustainable trade.

Seven *Corallium* species are traded worldwide as jewelry and other decorative products. Of all the deep-sea species, the *Corallium* trade is the largest in volume, estimated at 30 to 50 metric tons harvested per year. 26 million pieces were imported by the United States from 2001 to 2006.

Black coral is another valuable deep-sea coral species that is traded commercially as a jewelry and decoration item. However, the size of the black coral trade is approximately five metric tons, with 500,000 pieces per year imported by the United States, or less than 17 percent of the size of the red coral trade. The CITES Appendix II listing for black coral has improved the ability to monitor trade and helped countries strengthen their management of the species.

All stony corals are listed on Appendix II of CITES. Stony corals are sold for home decoration, tourist mementos, and aquariums.

For more information, see www.tooprecioustowear.org or contact Elizabeth Neeley at (insert local number at The Hague).



PROTECTION OF CORALLIUM IS LONG OVERDUE

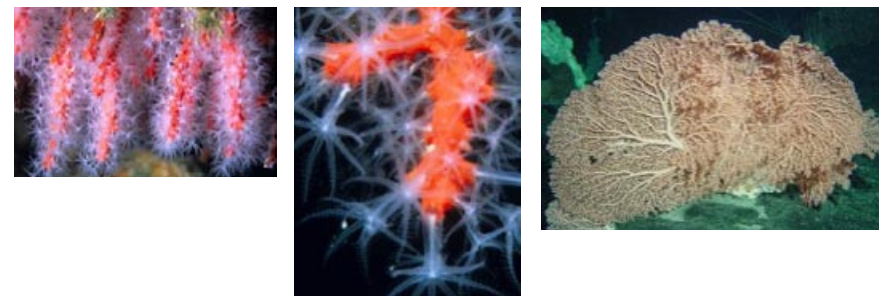
Corallium, also called red and pink coral, is extremely vulnerable to pressure from overfishing. Commercial harvest to satisfy international trade has reduced *Corallium* colony densities, shifted size structure to small, immature colonies that are worthless to the *Corallium* trade, and lowered reproductive output. Trade has also decreased the genetic diversity within and among populations. Despite the vulnerability of and the global market pressure on *Corallium*, there are no binding international instruments for ensuring its sustainable trade.

Seven *Corallium* species are traded worldwide as jewelry and other decorative products. Of all the deep-sea species, the *Corallium* trade is the largest in volume, estimated at 30 to 50 metric tons harvested per year. 26 million pieces were imported by the United States from 2001 to 2006.

Black coral is another valuable deep-sea coral species that is traded commercially as a jewelry and decoration item. However, the size of the black coral trade is approximately five metric tons, with 500,000 pieces per year imported by the United States, or less than 17 percent of the size of the red coral trade. The CITES Appendix II listing for black coral has improved the ability to monitor trade and helped countries strengthen their management of the species.

All stony corals are listed on Appendix II of CITES. Stony corals are sold for home decoration, tourist mementos, and aquariums.

For more information, see www.tooprecioustowear.org or contact Elizabeth Neeley at (insert local number at The Hague).



CORALLIUM REPORT CARD:

LEFT BEHIND IN GLOBAL PROTECTION

COMMON NAME	SCIENTIFIC REFERENCE	COMMERCIAL TRADE USE	RELATIVE TRADE VOLUME	CURRENT CITES PROTECTION STATUS
Red & Pink Coral	<i>Corallium</i>	Jewelry Home décor	High	No
Black Coral	<i>Antipatharia</i>	Jewelry Home décor	Moderate	Yes
Stony Coral	<i>Scleractinia</i>	Home décor Tourist mementos Aquarium specimens	Highest	Yes
Blue Coral	<i>Heliopora coerulea</i>	Jewelry Aquarium specimens	Low	Yes
Fire Coral & Lace Coral	<i>Millepora & Stylaster</i>	Aquarium specimens	Low	Yes
Organ-pipe coral	<i>Tubipora musica</i>	Aquarium specimens Curios	Low	Yes
Gold Coral	<i>Gerardia</i>	Jewelry	Low	No
Bamboo Coral	<i>Isididae</i>	Jewelry Home décor	Moderate	No

CORALLIUM REPORT CARD:

LEFT BEHIND IN GLOBAL PROTECTION

COMMON NAME	SCIENTIFIC REFERENCE	COMMERCIAL TRADE USE	RELATIVE TRADE VOLUME	CURRENT CITES PROTECTION STATUS
Red & Pink Coral	<i>Corallium</i>	Jewelry Home décor	High	No
Black Coral	<i>Antipatharia</i>	Jewelry Home décor	Moderate	Yes
Stony Coral	<i>Scleractinia</i>	Home décor Tourist mementos Aquarium specimens	Highest	Yes
Blue Coral	<i>Heliopora coerulea</i>	Jewelry Aquarium specimens	Low	Yes
Fire Coral & Lace Coral	<i>Millepora & Stylaster</i>	Aquarium specimens	Low	Yes
Organ-pipe coral	<i>Tubipora musica</i>	Aquarium specimens Curios	Low	Yes
Gold Coral	<i>Gerardia</i>	Jewelry	Low	No
Bamboo Coral	<i>Isididae</i>	Jewelry Home décor	Moderate	No